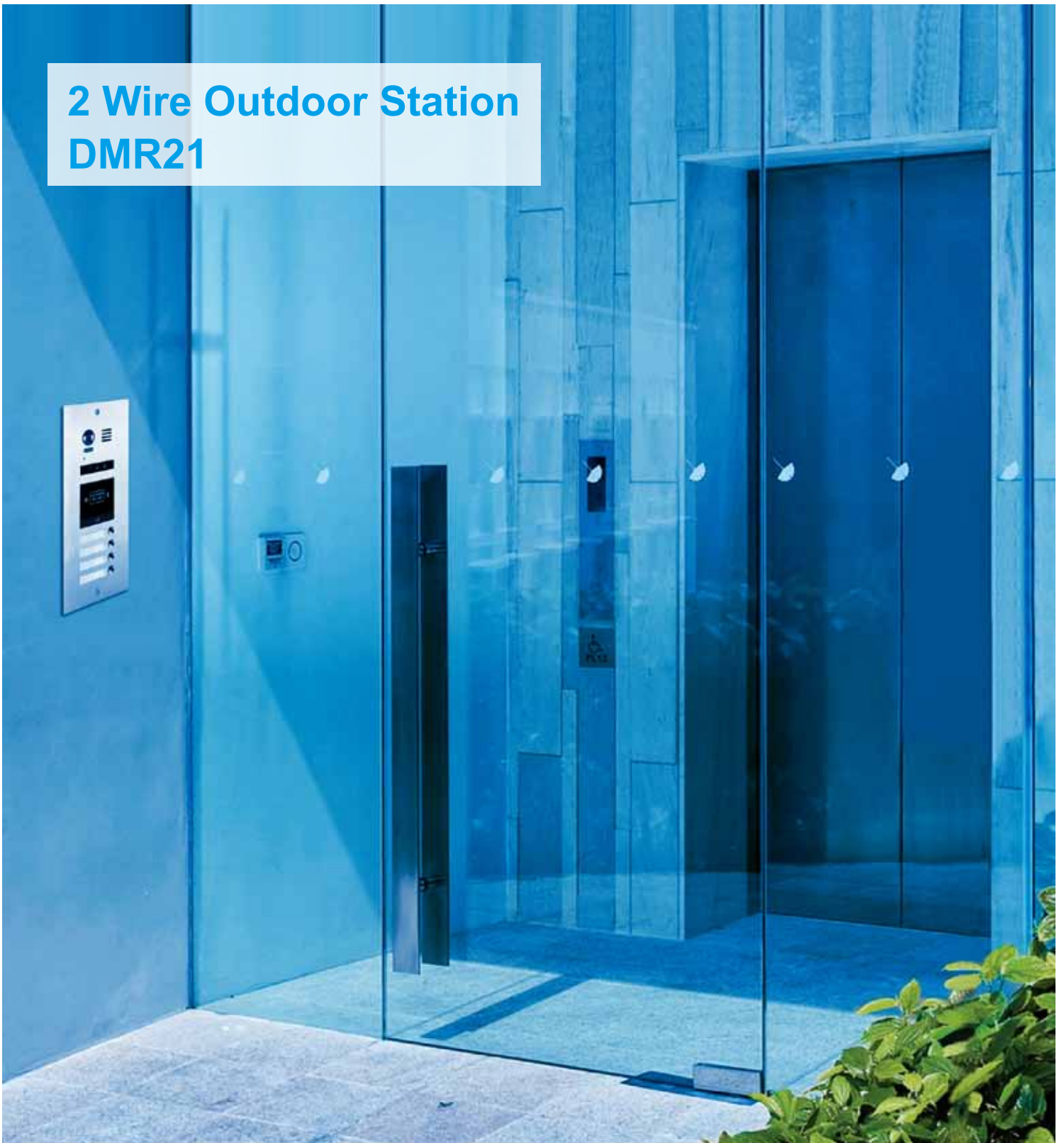


## 2 Wire Outdoor Station DMR21



# DMR21

Full 304 stainless steel panel against vandalism and cauterization

ARS 105° wide-angle camera



Super thin design for the flush mounted: only **2mm**  
Front panel dimension: (LxHxW) 133x316x2 mm

## Other Features:

- Synthesis language reminder
- Large capacity(max.128 apartments via BDU)
- Name list calling(only for TFT display module)

The DMR21 module celebrates the extreme functionality of the design. Extremely thin, with embedded box for flush mounted, wide-angle camera for large area and optical glass lens for better performance.

The front panel is used special screws for more safety protection against thieves.

Anti-theft with special screw & screw driver



With embedded box for flush mounted



## LED Indicator Description



Door station calling indicator



Door station talking indicator



Door opened indicator



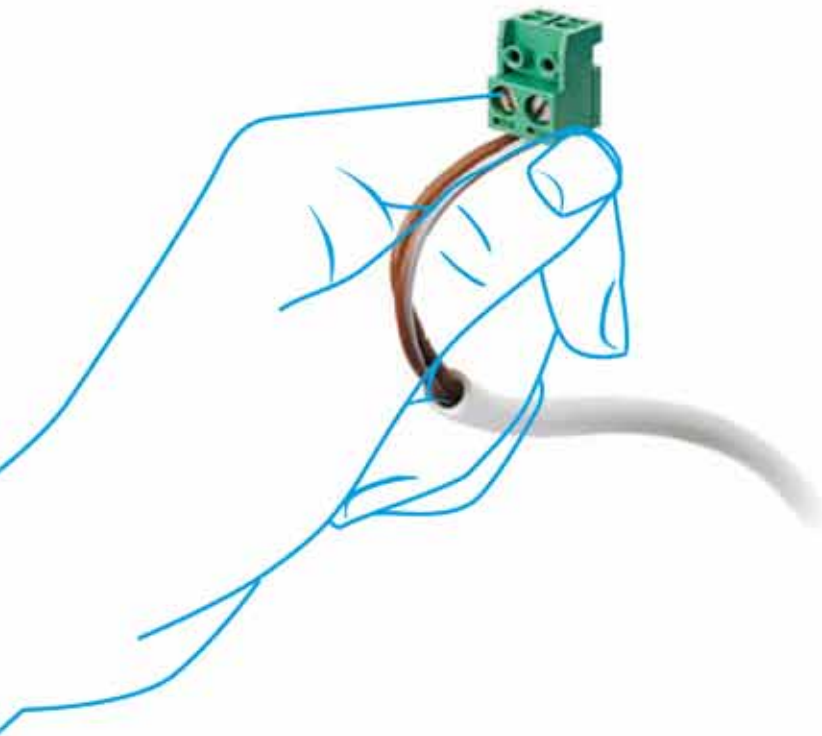
Wide angle camera  
Horizontal view: 105°  
Vertical view: 78°



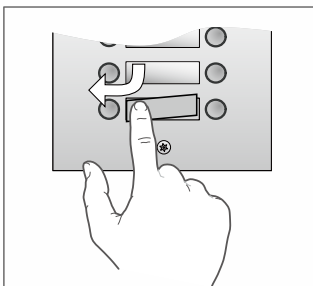
Night view LED  
Image can be seen clear  
both night and day

# Easy Installation

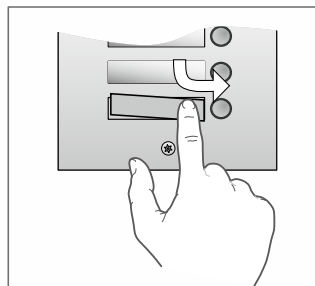
Thanks to the non polarized 2 wire sysetm,it is in fact easy to install,just with the plug-in connector,you can set up the system fast and funny!



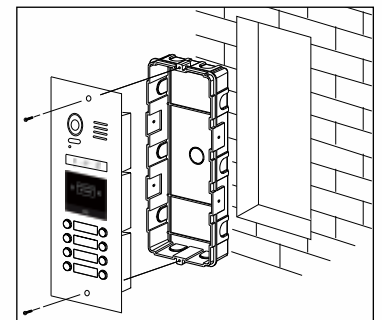
Double row button



Single row button



The name label replacement is so easy and just with a manual procedure which does not require the removal of the external cover.



Flush mounting is made easier by embedding boxes, simple and quick wiring .





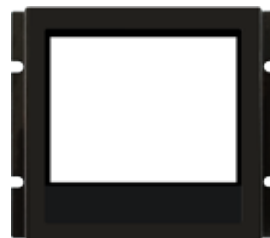
# Combination Mode



Video entry module



TFT display module



Information module



Access control module with card reader



Access control module with touch sensor keypad



Access control module with mechanical keypad



Single row call button module

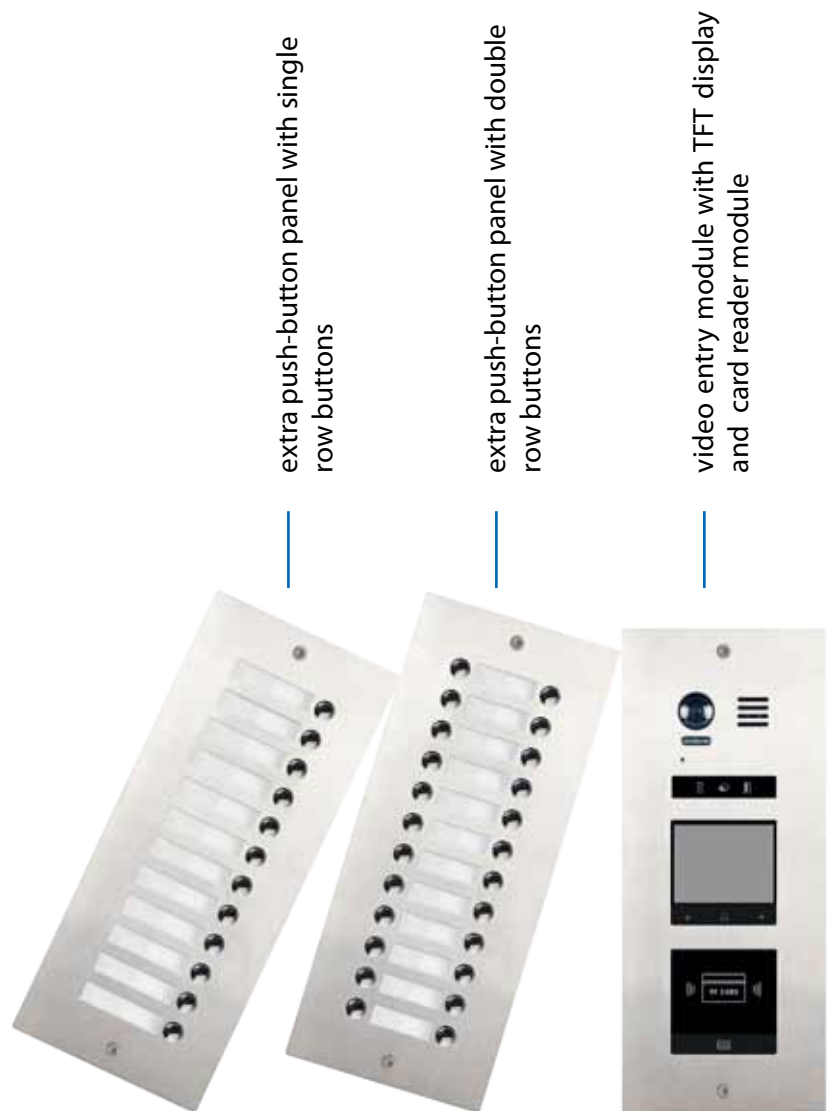


Double row call button module

# Combination Results

The modularity and extreme flexibility of DMR21 allow you to play with the modules and obtain the entry panel most suited to your needs. It's user-friendly and intuitive.

Here are some examples.





video entry module with single row buttons



video entry module with double row buttons



video entry module with touch sensor button module and single row buttons



video entry module with card reader module and double row buttons



video entry module with TFT display module and double row buttons and extra push-button panel with double row buttons

