



K-STEEL

ENTRANCE PANEL



Style and security.
The entrance panel is now as secure
as your steel-clad front door.

Details are the real key to security and safety. With this concept in mind, Urmet has created K-Steel, an absolutely unique entrance panel that together with being modular offers state-of-the-art armoured features. Technological benefits and a commitment to design have without doubt given rise to a stylishly

designed product but also to one with the outstanding performance of amour plating, water-resistant and fire resistance. All this is available in a flexible, modular system that offers a vast range of colours for personalising frames. K-Steel is the perfect answer to style and security.



K-STEEL

ENTRANCE PANEL



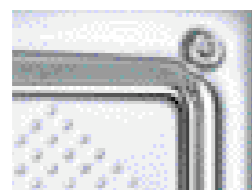
Security is its strength,
modularity its merit.



TV camera module with led type illumination.



Back-lit button.



Tamper-resistant screw bright silver finish frame.

The result of in-depth technological research, Urmet's K-Steel entrance panel has all the features of an inviolable object thanks to the use of **tamper-proof screws** and its resistance to corrosion from weather elements. In fact, it is IP45 rated.

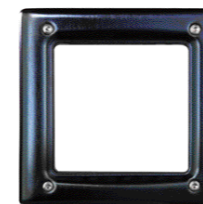
This means that it resists being penetrated by any solid object that is larger than one millimetre and to water jets. In addition, it offers excellent fire-resistance properties thus reducing the hazards caused by acts of vandalism.

The K-Steel modules, available with various call key configurations and outside door speaker unit, feature a futuristic stainless steel **face-plate with "super mirror" surface**. The embedding boxes are made of galvanised sheet metal and structured to house 1, 2 or 3 modules. **The highly flexible K-Steel system has been designed to cater to all requirements:** from "4+n" wire to "1+1" wire systems for door phone installations, from conventional 5-wire CO AX to 5-wire systems for the video door entryphones. It can also be configured for digital systems with numeric or alphanumeric call for access control.

Style is standard, the colour is your option.

K-Steel by Urmet is designed to make installation as simple as possible. Once the type of system has been configured, i.e. the modules required, all that is left to do is to select the frame to complete the arrangement. And the fun starts here because Urmet offers a range of **frames in an assortment of**

colours and finishes including satin or silver finish steel and PVD brass or even electric blue. A range that allows numerous personal interpretations and taste options. For this entrance panel the exclusive Personalised Name Card service is available, which can be accessed at the Club In web site pages.



MODULES WITH BUILT-IN LOUDSPEAKING UNIT

Symbol	Reference	Description	Dimensions W x H
◆▲	Ref. 1155/30	Without call buttons	125 x 106 mm
◆▲	Ref. 1155/31	With 1 call button	125 x 106 mm
◆▲	Ref. 1155/32A	With 2 call buttons	125 x 106 mm
●■	Ref. 1155/20	Without call button	125 x 106 mm
●■	Ref. 1155/21	With 1 call button	125 x 106 mm
●■	Ref. 1155/22A	With 2 call buttons	125 x 106 mm
⌘	Ref. 1038/5	Digitizer with integrated speaker unit on K-Steel module for Digivoice System (pag. 108).	125 x 106 mm
⌘	Ref. 1072/5	Digitizer with integrated speaker unit on K-Steel module for Bibus System (pag. 103).	125 x 106 mm



Ref. 1155/21



K-STEEL mod. 1155/mod. 1755



Ref. 1155/13A

MODULES WITH
BUTTONS AND
REPERTORY
MODULES

			Dimensions W x H
✓	Ref. 1155/11	With 1 call button	125 x 106 mm
✓	Ref. 1155/12A	With 2 call buttons	125 x 106 mm
✓	Ref. 1155/13A	With 3 call buttons	125 x 106 mm
✓	Ref. 1155/14A	With 4 call buttons	125 x 106 mm
✓	Ref. 1155/50	Repertory for house number	125 x 106 mm
✓	Ref. 1155/59	Blank module	125 x 106 mm

Note: the button common can be separate.

DOOR OPENER
MODULE

● ◆ ▲ ■	Ref. 1156/10	Door opener module with code keypad, one K-steel module (pag. 116).
● ◆ ▲ ■	Ref. 1103/3	Door opener module with proximity key reader in one K-Steel module (pag. 114).
	Ref. 1125/50	Ref. 1103/3 proximity key (10 pieces per box).



Ref. 1156/10

CAMERA
MODULES

			Dimensions W x H
▲	Ref. 1755/30A	CCD b/w manual pan and tilt camera with built-in light for five wire systems, 50 Hz.	125 x 106 mm
▲	Ref. 1755/39A	As REF. 1755/30A but for 60 Hz systems	125 x 106 mm
■	Ref. 1755/40	CCD color manual pan and tilt camera with built-in light for coaxial systems, 50 Hz	125 x 106 mm
✕ ■	Ref. 1755/70	CCD b/w manual pan and tilt camera with built-in light for coaxial systems, 50 Hz	125 x 106 mm
▲	Ref. 1755/79	As REF. 1755/70 but for 60 Hz systems	125 x 106 mm
■	Ref. 1755/80	CCD b/w manual pan and tilt camera with built-in light, integrated loudspeaking unit for coaxial systems, 50 Hz	125 x 106 mm
■	Ref. 1755/81	CCD b/w manual pan and tilt camera with built-in light, integrated loudspeaking unit and 1 call key for coaxial systems, 50 Hz	125 x 106 mm
▲	Ref. 1755/20	IR module 50Hz BW with built-in door unit for 5-wire systems	125 x 106 mm
▲	Ref. 1755/21	IR module 50Hz BW with built-in door unit and 1 calling button for 5-wire systems	125 x 106 mm



Ref. 1103/3

SECURITY OF
CONVERSATION
DEVICE

◆ ▲	Ref. 1145/74	Secrecy of Conversation Device for Sinthesi and K-Steel panel This device must be fitted in the push button panel for '1+1' systems. One is required for every four buttons. Note: The module with loudspeaking unit with 1-2 buttons are already equipped with the secrecy of conversation device.
●	Ref. 1155/75	Secrecy of conversation device for "4+n" wires systems



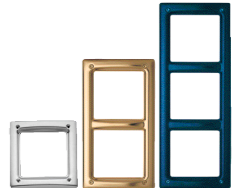
Ref. 1755/81 - Ref. 1155/91

EMBEDDING BOXES
WITH FRAMES

			Dimensions, flush-mounted section W x H
✓	Ref. 1155/61	Embedding box, one module with frame, spacers and joining elements.	138 x 139 x 55 mm
✓	Ref. 1155/62	Embedding box, two modules with frame, spacers and joining elements.	138 x 256 x 55 mm
✓	Ref. 1155/63	Embedding box, three modules with frame, spacers and joining elements.	138 x 376 x 55 mm

FRAMES

✓	Ref. 1155/84	1 module front frame with fastening screws, brass finish, PVD treated.
✓	Ref. 1155/85	2 modules front frame with fastening screws, brass finish, PVD treated.
✓	Ref. 1155/86	3 modules front frame with fastening screws, brass finish, PVD treated.
✓	Ref. 1155/87*	1 module front frame with fastening screws, blue stainless steel finish.
✓	Ref. 1155/88*	2 modules front frame with fastening screws, blue stainless steel finish.
✓	Ref. 1155/89*	3 modules front frame with fastening screws, blue stainless steel finish.
✓	Ref. 1155/91	1 module front frame with fastening screws, polished stainless steel.
✓	Ref. 1155/92	2 modules front frame with fastening screws, polished stainless steel.
✓	Ref. 1155/93	3 modules front frame with fastening screws, polished stainless steel.



Ref. 1155/91-1155/85-1155/89

CASES WITH HOOD

	Ref. 1155/311	Case with hood for 1 module (1 row) made of stainless steel. Without frame.
	Ref. 1155/312	Case with hood for 2 modules (1 row) made of stainless steel. Without frame.
	Ref. 1155/313	Case with hood for 3 modules (1 row) made of stainless steel. Without frame.



Ref. 1155/62

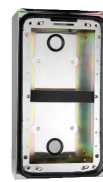
ACCESSORIES

✓	Ref. 1155/54	Four embedding box joint kit (2 spacers + one cross frame + crossbar kit + frame screws).
---	---------------------	---

SPARE PARTS

✓	Ref. 1155/101	Set of security screws (four screws + screw driver).
✓	Ref. 1155/102	Set of 10 name tags
✓	Ref. 1155/103A	Light circuit for modules with 1-2 key loudspeaking unit (REF. 1155/21, REF. 1155/22, REF. 1155/31, REF. 1155/32).
✓	Ref. 1155/104	Printed circuit for "4+n" wires system loudspeaking unit
✓	Ref. 1155/105	Printed circuit for 5 wires system loudspeaking unit
✓	Ref. 1155/106	Ten (10) spare transparent covers for house number
✓	Ref. 1155/107A	Light circuit for modules without loudspeaking units with one, two, four buttons (REF. 1155/11, REF. 1155/12, REF. 1155/14).
✓	Ref. 1155/108	Set of PVD security screws (four screws + screw driver).
✓	Ref. 1755/102	Ten (10) spare transparent covers for camera unit
	Ref. 1755/105	Spare 5-wire system door unit printed circuit for 1755/20 and 1755/21
	Ref. 1755/106	Spare light circuit for module Ref. 1755/81

* Available to end of stock.



Ref. 1155/312